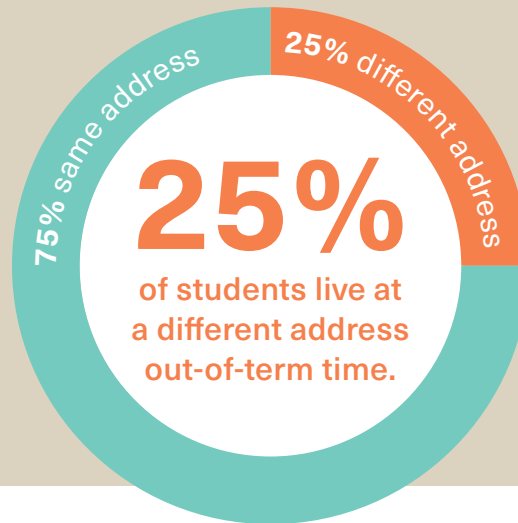




Student Travel Survey Insights

Nearly
500
students
completed the
travel survey.

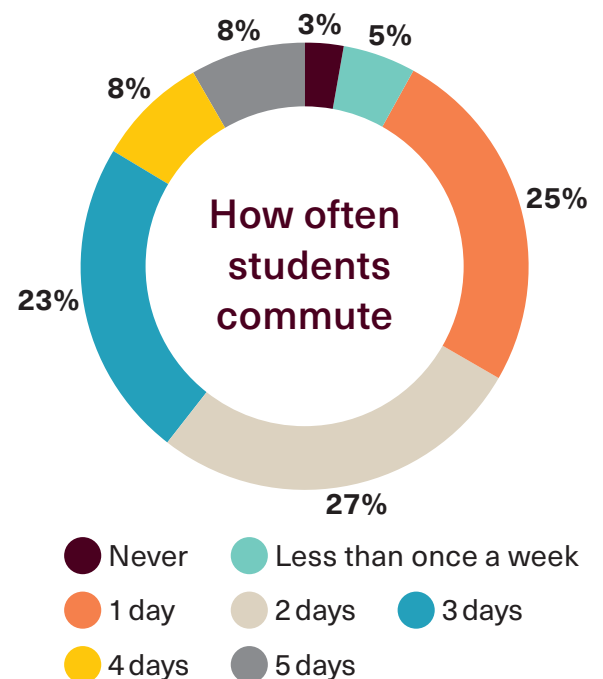
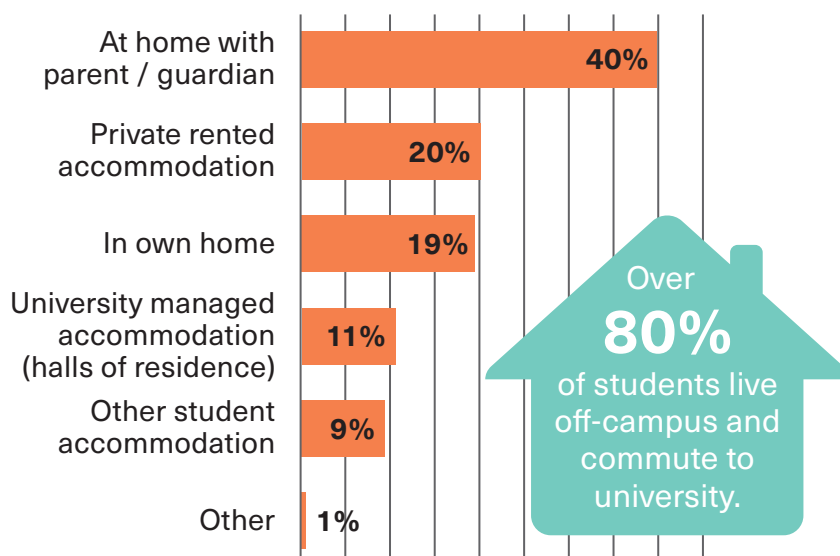
Just over 10% of respondents were international students.



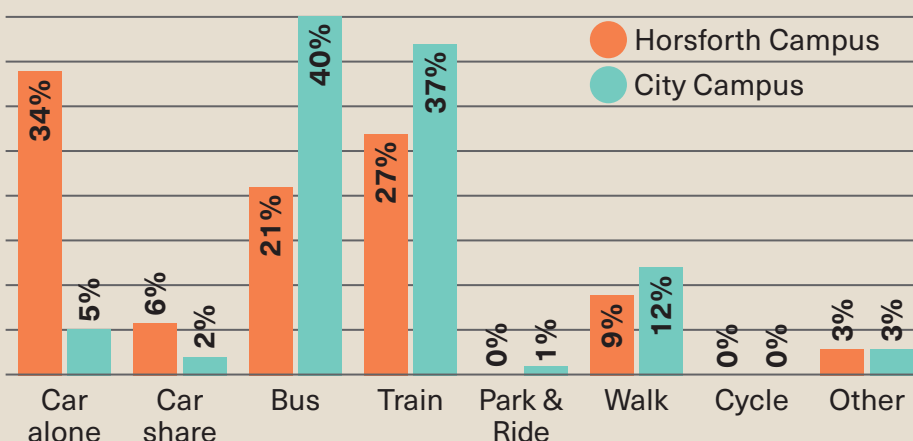
3/4

Nearly ¾ of respondents are based at our Horsforth campus.

Where our students live during term time



How our students travel



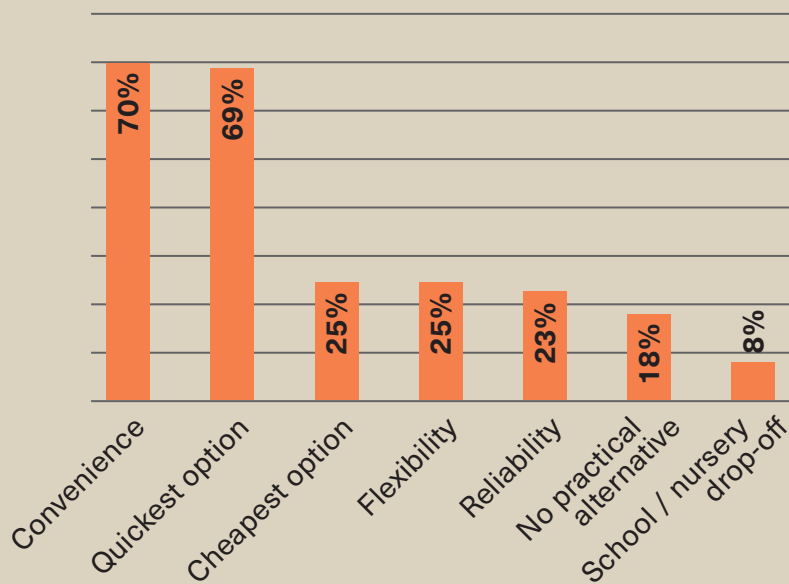
34% of students at Horsforth commute by car alone, compared with 5% at City campus.

Car alone

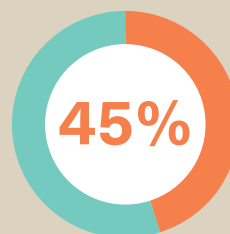


34% in 2025, compared to 32% in 2023.

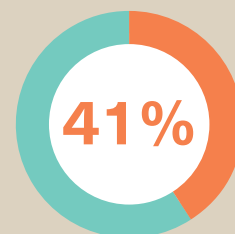
Why students drive



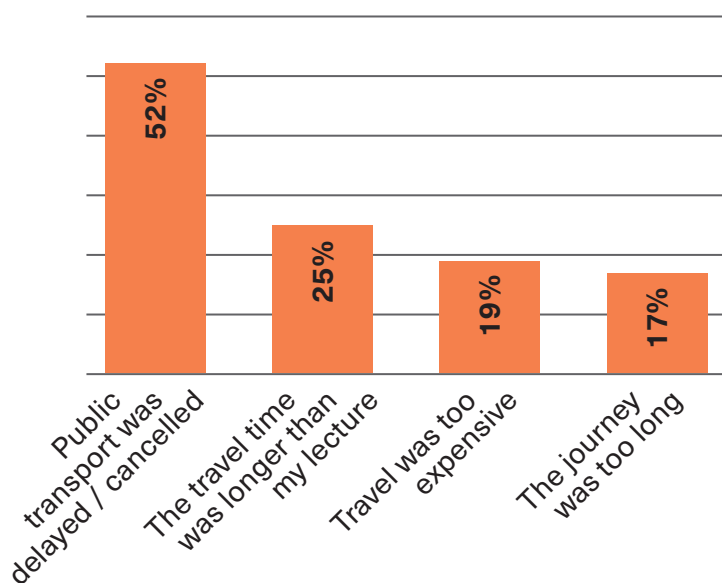
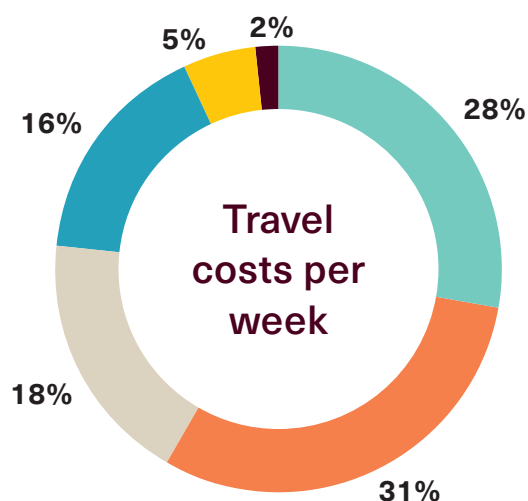
The main reasons students drive are **convenience** and **journey time**.



45% of commuting students live **more than 10 miles** from university.



41% have a journey by public transport of **over 45 minutes**.



Over half of students that commute by public transport have missed teaching due to delayed or cancelled services. Nearly a fifth have due to travel costs.

Carbon

Day-to-day commuting by students generates **1,872 tonnes of CO₂e per year** equivalent to **413kg of CO₂e per year per head**.

This is equivalent to over **9,000 flights** between Leeds Bradford Airport and Paris.



Students travelling to university at the start and end of the academic year, or making return trips to a non-term-time address throughout the year generate

44 tonnes of CO₂e per year.

WHAT SUPPORT DO STUDENTS WANT?



To encourage public transport, students would like to see cheaper fares and more reliable and frequent services.



To support active travel, students would like to see rewards for walking and cycling, discounts on new and second-hand bikes and improved cycle lanes in the local area.



To most popular incentives to car share are rewards for sharing and an app to find a journey match.

FREE-TEXT FEEDBACK

Key themes that came out of the free-text feedback centred on:



Parking availability and costs (at Horsforth and City).



Lack of direct public transport services and resultant impact on journey time (at Horsforth).



Reliability of bus services (at Horsforth).



Lack of local cycle routes.

WHAT'S NEXT....



The full findings of the travel survey will be submitted to Leeds City Council in compliance with our Integrated Transport Strategy reporting schedule.



The carbon assessments will be submitted to HESA as part of our broader scope 3 emissions reporting.



We will be reviewing the actions we intend to take over the coming months to support our students to travel to campus as sustainably as possible.



Leeds Trinity
University